



Multiple Sewershed Package 15 (Railroad) Project
Solicitation Number: CO-00499
Job No.: 19-4508

ADDENDUM 1
November 8, 2021

To Bidder of Record:

This addendum, applicable to work referenced above, is an amendment to the bid proposal, plans and specifications and as such will be a part of and included in the Contract Documents. Acknowledge receipt of this addendum by entering the Addendum number and issue date on the space provided in submitted copies of the bid proposal.

RESPONSES TO QUESTIONS

No questions were submitted by the due date specified on the contract document.

CHANGES TO SPECIFICATIONS

1. Remove and replace the Contract Documents Table of Contents with the attached revised Contract Documents Table of Contents with updated SAWS specifications URL to provide the website address to the 2017 specifications.

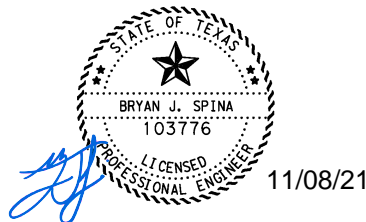
CHANGES TO PLANS

1. Remove and replace Page S3A, General Notes Sheet 1 of 2, to the plans with the attached revised Page S3A dated 11/5/2021 with the updated SAWS specifications URL to provide the website address to the 2017 specifications.

END OF ADDENDUM 1

This Addendum is three (3) pages in its entirety, with two (2) attachments.

Attachments: Contract Documents Table of Contents (1 Page)
Page S3A of the Plans (1 page)



Bryan J. Spina, P.E., CFM
LNV, LLC
TBPLES Firm No. F-366

Contract Documents Table of Contents

<u>BIDDING AND CONTRACT REQUIREMENTS</u>	<u>PAGE</u>
Invitation to Bidders (Rev. 11.28.2018)	IV-1
Electronic Bid Opening Instructions (4.20.20)	EBOI-1
Instructions to Bidders (Rev. 06.20).....	IB-1
Workers' Compensation Insurance Coverage Requirements (Rev. 9.08.2015).....	WC-1
Contractor's Bid Packet Checklist (Rev. 12.19).....	BC-1
Bid Proposal (Rev 0921)	BP-1
Proposal Certification (Rev. 4.14.2017).....	PC-1
Good Faith Effort Plan (Rev. 5.18.2017)	GFEP-1
Conflict of Interest (Rev. 1.1.2021).....	Form CIQ
Wage Decisions	WR-1
General Conditions of the Contract (Rev. 6.15)	GC-1
Contract Agreement (Rev.02.14.19)	CA-1
Performance and Payment Bond (Rev. 10.18.2018)	PB-1
Contractor Suspension Policy (Rev. 3.14).....	SP-1
Contractor Security Procedures (Rev. 3.4.20)	SP-10
Request for Taxpayer Identification Number and Certification Form (Rev. 10.18).....	W-9
Instructions for Completing the ACORD Certificate of Liability Insurance (Rev. 12.19).....	ICS
Supplemental Conditions (Rev. 100621).....	SS-1
Special Conditions.	SC-1
Special Provisions to the Technical Specifications.....	SPTS-1
Special Specifications	SPSP-1
UPRR Permits.....	UPRR-1
Right-of-Entries to Construct.....	ROEC-1
(Separate Documents)	
CITY OF SAN ANTONIO (COSA) STANDARD SPECIFICATIONS FOR PUBLIC WORKS CONSTRUCTION (Latest Edition)	
SAWS SPECIFICATIONS FOR WATER & SANITARY SEWER CONSTRUCTION (February 2017)	
https://apps.saws.org/business_center/specs/constspecs/archive.cfm	

11/5/2021 11:04:44 AM C:\Users\avi\OneDrive\Projects\190044\Drawings\190044\GENNOTES 1.dgn

GENERAL NOTES:

- 1. ALL MATERIALS AND CONSTRUCTION PROCEDURES WITHIN THE SCOPE OF THIS CONTRACT SHALL BE APPROVED BY THE SAN ANTONIO WATER SYSTEM (SAWS) AND COMPLY WITH THE PLANS, SPECIFICATIONS, GENERAL CONDITIONS AND WITH THE FOLLOWING AS APPLICABLE:
 - A. CURRENT TEXAS COMMISSION ON ENVIRONMENTAL QUALITY (TCEQ) "DESIGN CRITERIA FOR DOMESTIC WASTEWATER SYSTEM", TEXAS ADMINISTRATIVE CODE (TAC) TITLE 30 PART 1 CHAPTER 217 AND "PUBLIC DRINKING WATER", TAC TITLE 30 PART 1 CHAPTER 290.
 - B. CURRENT TxDOT "STANDARD SPECIFICATIONS FOR CONSTRUCTION OF HIGHWAYS, STREETS AND DRAINAGE".
 - C. LATEST 2017 REVISION OF "SAN ANTONIO WATER SYSTEM STANDARD SPECIFICATIONS FOR WATER AND SANITARY SEWER CONSTRUCTION".
 - D. CURRENT CITY OF SAN ANTONIO "STANDARD SPECIFICATIONS FOR CONSTRUCTION".
 - E. CURRENT CITY OF SAN ANTONIO "UTILITY EXCAVATION CRITERIA MANUAL" (UECM).

2. THE CONTRACTOR SHALL OBTAIN SAWS STANDARD DETAILS FROM SAWS WEBSITE, http://apps.saws.org/business_center/specs/constspecs/archive.cfm UNLESS OTHERWISE NOTED WITHIN DESIGN PLANS.

- 3. THE CONTRACTOR IS TO NOTIFY AND MAKE ARRANGEMENTS WITH THE SAWS CONSTRUCTION INSPECTION DIVISION AT 210-233-3500 (DURING REGULAR SAWS WORKING HOURS), AND PROVIDE NOTIFICATION PROCEDURES THE CONTRACTOR WILL USE TO NOTIFY AFFECTED HOME RESIDENTS AND/OR PROPERTY OWNERS 72 HOURS PRIOR TO EXCAVATION. OUTSIDE OF REGULAR SAWS WORKING HOURS THE SAWS EOC SHOULD BE CONTACTED AT 210-704-7297.
- 4. THE CONTRACTOR WILL COORDINATE USE OF SAWS PREMISES AT NO ADDITIONAL COST TO SAWS. SUCH EFFORTS INCLUDE, BUT ARE NOT LIMITED TO, OBTAINING SECURITY IDENTIFICATION BADGES REQUIRED TO ACCESS SAWS FACILITIES.
- 5. LOCATIONS AND DEPTHS OF EXISTING UTILITIES AND SERVICE LATERALS SHOWN ON THE PLANS ARE UNDERSTOOD TO BE APPROXIMATE. ACTUAL LOCATIONS AND DEPTHS MUST BE FIELD VERIFIED BY THE CONTRACTOR AT LEAST 1 WEEK PRIOR TO CONSTRUCTION. IT SHALL BE THE CONTRACTOR'S RESPONSIBILITY TO LOCATE UTILITY SERVICE LINES AS REQUIRED FOR CONSTRUCTION AND TO PROTECT THEM DURING CONSTRUCTION AT NO COST TO SAWS.
- 6. THE CONTRACTOR SHALL VERIFY THE EXACT LOCATION OF UNDERGROUND UTILITIES AND DRAINAGE STRUCTURES AT LEAST 1-2 WEEKS PRIOR TO CONSTRUCTION WHETHER SHOWN ON PLANS OR NOT. PLEASE ALLOW UP TO 7 BUSINESS DAYS FOR LOCATES REQUESTING PIPE LOCATION MARKERS ON SAWS FACILITIES. THE FOLLOWING CONTACT INFORMATION ARE SUPPLIED FOR VERIFICATION PURPOSES:

SAN ANTONIO WATER SYSTEM
SAWS UTILITY LOCATES:
<https://www.saws.org/service/locates-service/>
COSA DRAINAGE 210-206-8433
COSA TRAFFIC SIGNAL OPERATIONS 210-207-7720
TEXAS STATE WIDE ONE CALL LOCATOR
1-800-545-6005 OR 811

- 7. THE CONTRACTOR SHALL BE RESPONSIBLE FOR RESTORING EXISTING FENCES, CURBS, STREETS, DRIVEWAYS, SIDEWALKS, LANDSCAPING AND STRUCTURES TO ITS ORIGINAL OR BETTER CONDITION AS A RESULT OF DAMAGES DONE BY THE PROJECT'S CONSTRUCTION.
- 8. CONTRACTOR SHALL NOT MAKE USE OF DUMPSTERS OR WASTE BINS THAT ARE INTENDED TO SERVE RESIDENTS AND/OR BUSINESSES.
- 9. ALL WORK IN TEXAS HIGHWAY DEPARTMENT AND BEXAR COUNTY RIGHT-OF-WAY SHALL BE DONE IN ACCORDANCE WITH RESPECTIVE CONSTRUCTION SPECIFICATIONS AND PERMIT.
- 10. THE CONTRACTOR SHALL COMPLY WITH CITY OF SAN ANTONIO OF OTHER GOVERNING MUNICIPALITY'S TREE ORDINANCES WHEN EXCAVATING NEAR TREES.
- 11. THE CONTRACTOR SHALL NOT PLACE ANY WASTE MATERIALS IN THE 100-YEAR FLOOD PLAIN WITHOUT FIRST OBTAINING AN APPROVED FLOOD PLAIN PERMIT.
- 12. ANY WORK COMPLETED WITHOUT PRIOR WRITTEN AUTHORIZATION WHICH IS NOT INCLUDED IN THESE PLANS AND SPECIFICATIONS WILL NOT BE COMPENSATED BY THE SAN ANTONIO WATER SYSTEM.
- 13. HOLIDAY WORK: CONTRACTORS WILL NOT BE ALLOWED TO PERFORM SAWS WORK ON SAWS RECOGNIZED HOLIDAYS. REQUEST SHOULD BE SENT TO constworkreq@saws.org.

WEEKEND WORK: CONTRACTORS ARE REQUIRED TO NOTIFY THE SAWS INSPECTION CONSTRUCTION DEPARTMENT 48 HOURS IN ADVANCE TO REQUEST WEEKEND WORK. REQUEST SHOULD BE SENT TO constworkreq@saws.org.

- 14. PRE CON SITE VIDEO: BEFORE THE START OF ANY CONSTRUCTION, THE SITE MUST BE VIDEO RECORDED BY THE CONTRACTOR WITH ONE COPY SUBMITTED TO SAWS INSPECTIONS. A PRE-SITE VIDEO WILL PROVIDE ACCURATE DOCUMENTATION OF THE EXISTING CONDITIONS (NSPI).
- 15. POWER POLE BRACING: CONTRACTORS SHOULD BE ADVISED THAT THERE ARE EXISTING OVERHEAD UTILITY POLES ALONG THE PROJECT CORRIDOR. CONTRACTORS SHOULD FURTHER BE ADVISED THAT IF THE DISTANCE FROM THE OUTSIDE FACE OF A UTILITY TRENCH TO THE FACE OF A UTILITY POLE IS LESS THAN 5 FEET, SAID UTILITY POLE IS SUBJECT TO BRACING, BASED ON A DETERMINATION MADE BY UTILITY POLE OWNER. COSTS INCURRED BY CONTRACTOR FOR BRACING OF THESE UTILITY POLES IS SUBSIDIARY TO THAT RESPECTIVE UTILITY COMPANY'S WORK. IT IS ADVISABLE FOR THE CONTRACTOR TO REVIEW THE CONSTRUCTION DOCUMENTS, AND VISIT THE CONSTRUCTION SITE TO DETERMINE POTENTIAL IMPACTS.
- 16. CONSTRUCTION SEQUENCING: IT IS THE CONTRACTOR'S SOLE RESPONSIBILITY TO SCHEDULE SEQUENCING FOR REMOVAL AND INSTALLATION OF EXISTING AND PROPOSED SAWS UTILITIES IN CONJUNCTION WITH GENERAL PROJECT CONSTRUCTION. SEQUENCE OF CONSTRUCTION ACTIVITIES SHALL BE CONSIDERED IN ORDER TO MINIMIZE THE EXTENT AND DURATION OF DISTURBANCES.
- 17. AS PART OF SAFETY EFFORTS REQUIRED BY THE GENERAL CONDITIONS OF THIS CONTRACT THE CONTRACTOR SHALL COMPLY WITH APPLICABLE REGULATIONS INCLUDING, BUT NOT LIMITED TO, THOSE OVERSEEN BY THE U.S. OCCUPATIONAL SAFETY AND HEALTH ADMINISTRATION (OSHA). OSHA INFORMATION AND RELATED MATERIALS MAY BE OBTAINED AT <https://www.osha.gov/> OR AT THE OSHA SAN ANTONIO OFFICE LOCATED AT FOUNTAINHEAD TOWER, SUITE 605 8200 W. INTERSTATE 10 SAN ANTONIO, TX 78230 WHICH IS ALSO REACHABLE BY PHONE AT (210) 472-5040.
- 18. TRENCH EXCAVATION SAFETY PROTECTION: CONTRACTOR AND/OR CONTRACTOR'S INDEPENDENTLY RETAINED EMPLOYEE OR STRUCTURAL DESIGN/GEOTECHNICAL/SAFETY/EQUIPMENT CONSULTANT, IF ANY, SHALL REVIEW THESE PLANS AND AVAILABLE GEOTECHNICAL INFORMATION AND THE ANTICIPATED INSTALLATION SITE(S) WITHIN THE PROJECT WORK AREAS IN ORDER TO IMPLEMENT CONTRACTOR'S TRENCH EXCAVATION SAFETY PROTECTION SYSTEMS, PROGRAMS, AND/OR PROCEDURES. THE CONTRACTOR'S IMPLEMENTATION OF THE SYSTEMS, PROGRAMS AND/OR PROCEDURES SHALL PROVIDE WITH ADEQUATE TRENCH EXCAVATION SAFETY PROTECTION THAT COMPLIES WITH, AS A MINIMUM, OSHA STANDARDS FOR TRENCH EXCAVATIONS. SPECIFICALLY, CONTRACTOR AND/OR CONTRACTOR'S INDEPENDENTLY RETAINED EMPLOYEE OR SAFETY CONSULTANT SHALL IMPLEMENT A TRENCH SAFETY PROGRAM IN ACCORDANCE WITH OSHA STANDARDS GOVERNING THE PRESENCE AND ACTIVITIES OF INDIVIDUALS WORKING IN AND AROUND TRENCH EXCAVATION.

SEWER GENERAL NOTES:

- 1. THE CONTRACTOR IS RESPONSIBLE FOR ENSURING THAT NO SANITARY SEWER OVERFLOW (SSO) OCCURS AS A RESULT OF THEIR WORK. ALL CONTRACTOR PERSONNEL RESPONSIBLE FOR SSO PREVENTION AND CONTROL SHALL BE TRAINED ON PROPER RESPONSE. SHOULD AN SSO OCCUR, THE CONTRACTOR SHALL:
 - A. IDENTIFY THE SOURCE OF THE SSO AND NOTIFY SAWS EMERGENCY OPERATIONS CENTER (EOC) IMMEDIATELY AT 210-704-SAWS (210-704-7297). PROVIDE THE ADDRESS OF THE SPILL AND AN ESTIMATED VOLUME OR FLOW.
 - B. ATTEMPT TO ELIMINATE THE SOURCE OF THE SSO.
 - C. CONTAIN SEWAGE FROM THE SSO TO THE EXTENT OF PREVENTING A POSSIBLE CONTAMINATION OF WATERWAYS.
 - D. CLEAN UP SPILL SITE (RETURN CONTAINED SEWAGE TO THE COLLECTION SYSTEM IF POSSIBLE) AND PROPERLY DISPOSE OF CONTAMINATED SOIL/MATERIALS.
 - E. CLEAN THE AFFECTED SEWER MAINS AND REMOVE ANY DEBRIS.
 - F. MEET ALL POST SSO REQUIREMENTS AS PER EPA CONSENT DECREE, INCLUDING LINE CLEANING AND TELEVISIONING THE AFFECTED SEWER MAINS (AT SAWS DIRECTION) WITHIN 24 HOURS.
- 2. THE CONTRACTOR SHALL PROVIDE BYPASS PUMPING OF SEWAGE AROUND EACH SEGMENT OF PIPE TO BE REPLACED, IN ACCORDANCE WITH SAWS SPECIAL SPECIFICATION ITEM NO. 864-S1, "BYPASS PUMPING SMALL DIAMETER SANITARY SEWERS" AND ITEM NO. 864-S2 "BYPASS PUMPING LARGE DIAMETER SANITARY SEWERS". PAYMENT FOR SUCH WORK WILL BE MADE UNDER THE BID BYPASS PUMPING, SMALL DIAMETER SANITARY SEWER ((LOCATION)) OR BYPASS PUMPING, LARGE DIAMETER SANITARY SEWER ((LOCATION)) FOR THE LOCATION SPECIFIED AND AS OUTLINED IN THE SPECIAL PROVISIONS.

SHOULD THE CONTRACTOR FAIL TO ADDRESS AN SSO IMMEDIATELY AND TO SAWS SATISFACTION, THEY WILL BE RESPONSIBLE FOR ALL COSTS INCURRED BY SAWS, INCLUDING ANY FINES FROM EPA.

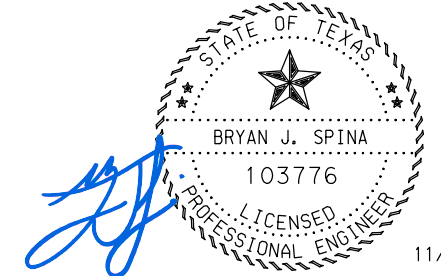
NO SEPARATE MEASUREMENT OR PAYMENT SHALL BE MADE FOR THIS WORK. ALL WORK SHALL BE DONE ACCORDING TO GUIDELINES SET BY THE TCEQ AND SAWS.



- 3. PRIOR TO TIE-INS, ANY SHUTDOWNS OF EXISTING FORCE MAINS OF ANY SIZE MUST BE COORDINATED WITH THE SAWS CONSTRUCTION INSPECTION DIVISION AT 210-233-3500 AND/OR SAWS PRODUCTION GROUPS AT LEAST TWO WEEKS OR MORE IN ADVANCE OF THE SHUTDOWN. THE CONTRACTOR MUST ALSO PROVIDE A SEQUENCE OF WORK AS RELATED TO TIE-INS; THIS IS AT NO ADDITIONAL COST TO SAWS OR THE PROJECT AND IT IS THE RESPONSIBILITY OF THE CONTRACTOR TO SEQUENCE THE WORK ACCORDINGLY.
- 4. ELEVATIONS POSTED FOR TOP OF MANHOLES ARE FOR REFERENCE ONLY: IT SHALL BE THE RESPONSIBILITY OF THE CONTRACTOR TO MAKE ALL ALLOWANCES AND ADJUSTMENTS FOR TOP OF MANHOLES TO MATCH THE FINISHED GRADE OF THE PROJECTS IMPROVEMENTS (NSPI).
- 5. SMART MANHOLE COVERS: THE CONTRACTOR SHALL NOTIFY SAWS EOC AT 210-704-SAWS (210-704-7297) AND EITHER AMERICA ESPINOZA AT 210-233-2934 OR JOSE A. MARTINEZ AT 210-233-3071 A MINIMUM OF 72 HOURS, NOT COUNTING WEEKENDS OR SAWS HOLIDAYS, BEFORE WORKING ON THE PIPE OR MANHOLE, IN ORDER TO HAVE SAWS REMOVE THE SMART COVER. ANY DAMAGE DONE TO THE SMART COVER WILL BE CHARGED TO THE CONTRACTOR THROUGH A CHANGE ORDER.
- 6. FLOW METERS IN MANHOLES: THE CONTRACTOR SHALL NOTIFY BOBBY JOHNSON AT 210-233-3493 OR ABEL BORUNDA AT 210-233-3704 A MINIMUM OF 72 HOURS, NOT COUNTING WEEKENDS OR SAWS HOLIDAYS, BEFORE WORKING ON THE PIPE OR MANHOLE, IN ORDER TO HAVE SAWS REMOVE THE FLOW METER IN THE MANHOLE. ANY DAMAGE DONE TO THE FLOW METER WILL BE CHARGED TO THE CONTRACTOR THROUGH A CHANGE ORDER.

ADDITIONAL GENERAL NOTES

- 1. CONTRACTOR TO FOLLOW UPRR GUIDELINES FOR TEMPORARY SHORING, A COPY OF WHICH WILL BE PROVIDED UPON REQUEST. ZONE CLASSIFICATIONS SHOULD BE VERIFIED PRIOR TO EXCAVATION. ALL TEMPORARY SHORING REQUIREMENTS WILL BE SUBSIDIARY TO ITEM 550 "TRENCH EXCAVATION SAFETY PROTECTION".
- 2. CONTRACTOR IS RESPONSIBLE FOR TEXAS POLLUTANT DISCHARGE ELIMINATION SYSTEM (TPDES) PERMITTING AND DEVELOPMENT OF A STORMWATER POLLUTION PREVENTION PLAN (SW3P) FOR THE PROJECT. THE SW3P PLAN AND PROCEDURES SHALL BE IMPLEMENTED ACCORDING TO THE TCEQ AND EPA REGULATIONS FOR STORMWATER DISCHARGE FROM CONSTRUCTION ACTIVITIES. FINAL PROJECT ACCEPTANCE SHALL NOT BE GRANTED UNTIL ALL PERMANENT STABILIZATION MEASURES HAVE BEEN ESTABLISHED.
- 3. THE CONTRACTOR SHALL BE RESPONSIBLE FOR ALL NECESSARY MEANS AND METHODS OF CONSTRUCTION SHOULD GROUNDWATER BE ENCOUNTERED. (NO SEPARATE PAY ITEM.)
- 4. THE CONTRACTOR SHALL COORDINATE SMOKE TESTING OF SERVICE CONNECTIONS WITH SAWS OPERATIONS STAFF. IF LEAKS ARE FOUND IN TESTING, THE SERVICE RECONNECTION WILL BE DONE WITH OPEN CUT CONSTRUCTION METHODS.
- 5. CONTRACTOR SHALL INSPECT ALL TEMPORARY EROSION AND SEDIMENTATION CONTROLS WEEKLY AND AFTER EACH RAIN EVENT. CONTRACTOR SHALL REPAIR AND/OR REPLACE ANY DAMAGED CONTROLS IMMEDIATELY UPON DISCOVERY. CONTRACTOR SHALL REMOVE SEDIMENT FROM TEMPORARY SEDIMENT CONTROL FENCING WHEN SEDIMENT BUILDUP REACHES OR EXCEEDS 6 INCHES. CONTRACTOR SHALL REMOVE SEDIMENT FROM CURB INLET GRAVEL FILTERS WHEN SEDIMENT BUILDUP REACHES OR EXCEEDS 3 INCHES. THIS WORK SHALL BE CONSIDERED SUBSIDIARY TO OTHER BID ITEMS AND WILL NOT BE PAID FOR SEPARATELY.
- 6. FOR UTILITIES WITH CLEARANCES LESS THAN 2 FOOT WHILE PIPEBURSTING, CONTRACTOR TO EXCAVATE AND PROTECT UTILITIES WHILE STATICALLY PIPEBURSTING PAST THE UTILITY.
- 7. CONTRACTOR SHALL COORDINATE WITH UNION PACIFIC RAILROAD (UPRR) DURING ALL CONSTRUCTION OPERATIONS WITHIN UPRR RIGHT-OF-WAY, SO UPRR CAN PROVIDE CONSTRUCTION OBSERVATION.
- 8. DURING BORING AND PIPE BURSTING OPERATIONS, GROUND SETTLEMENT MONITORING SHALL BE CONDUCTED PER SPECIAL SPECIFICATION 5000, "SETTLEMENT MONITORING".
- 9. ALL STEEL CASING SHALL MEET THE FOLLOWING TABLE:

DIAMETER (INCHES)	THICKNESS (INCHES)	WEIGHT (LBS/FT)
18	0.375	70.59
24	0.438	110.22
30	0.500	157.53
36	0.562	212.70
42	0.625	276.18
48	0.625	316.53
- 10. UPRR FLAGGERS ARE REQUIRED AT ALL TIMES DURING ANY WORK OCCURRING IN UPRR RIGHT-OF-WAY.
- 11. THE UPRR "CALL BEFORE YOU DIG" (CBYD) PHONE NUMBER IS 1-800-336-9193.
- 12. NO WORK IS ALLOWED WITHIN THE MINIMUM CONSTRUCTION CLEARANCE ENVELOPE. SEE SHEET S82 FOR DETAIL.
- 13. MANHOLES WITHIN THE ZONE OF INFLUENCE OF EXISTING OR FUTURE UPRR TRACKS SHALL BE COPPER E80 LIVE LOAD.



1	11/4/21	REVISED BY ARDURRA #1	AVJ BJS
NO	DATE	DESCRIPTION	DWG CHK
REVISIONS			
		<small>TPDELS REGISTERED FIRM NO. ENGINEERING FIRM F-366 SURVEYING FIRM 10126502</small>	
<small>8918 TESORO DR, SUITE 401 SAN ANTONIO, TX 78217</small>		<small>PH. (210) 822-2232</small>	
<small>WWW.LNVINC.COM</small>			
 SAN ANTONIO WATER SYSTEM			
MULTIPLE SEWERSHED PACKAGE 15 (RAILROAD) SEWER PLANS			
GENERAL NOTES SHEET 1 of 2			
SCALE: N.T.S.			
MAP No(s):			DATE: 11/5/2021
SAWS JOB NO.: 19-4508			S3A
DRWN BY:	DSGN BY:	CHKD BY:	